



LUNAR

SERIES BY **KONSTRUKT™**

For technical reasons connected to digital and photographic reproduction, the textures shown here may not match the actual end product.

At Konstrukt™, we create innovative chemical systems that solve surface preparation challenges of the construction industry.

Konstrukt™ provides advanced construction chemical solutions to enable excellent surface preparation of substrates used in floors, walls and ceilings.

For over a decade, we have been leveraging the experience and expertise gained by Pacific Paint (Boysen) Philippines, Inc., a regional player in the chemical industry. We have listened to our customers very closely and have continually been coming up with the innovative solutions to these particular set of challenges that they encounter.

With Konstrukt™, our clients are assured that our solutions are of the same quality and superior durability that has made Boysen Paints the number one paint manufacturer in the Philippines.

Every need is carefully considered, every chemical system solution rigorously developed and manufactured.

Konstrukt™ is created for pros by pros.

For technical reasons connected to digital and photographic reproduction, the textures shown here may not match the actual end product.

SERIES BY KONSTRUKT™

For technical reasons connected to digital and photographic reproduction,
the textures shown here may not match the actual end product.

Lunar Series™

BY KONTRUKT™

From afar, the moon gleams exquisitely at sundown. It envelops the night with its mysterious aura, silently luring a curious spectator in. Its lulling presence pacifies the harshness of the day. Utterly hypnotizing, one experiences a sense of calm and completeness. Dazed eyes can't simply look away from it. Further zoom into its surface, it boasts varying textures—tiny and large craters, dark stretches, and rough impacts. Bombarded with asteroids and meteorites colliding with the lunar surface, it comes out beautifully undone. The moon is perfectly imperfect.

The Konstrukt Lunar Series is inspired by the aesthetically fascinating features of the moon. Each faux finish is striking but not overwhelming to the eye. The minimalist appeal and sleek ambiance add a flair of sophistication to any living space. Its simplicity and versatility render it as a perfect backdrop to highlight centerpieces. It is subtle but impactful—luxurious without being indulgent.



For technical reasons connected to digital and photographic reproduction, the textures shown here may not match the actual end product.



**FOR PROS.
BY PROS.**

For technical reasons connected to digital and photographic reproduction, the textures shown here may not match the actual end product.

Finishes

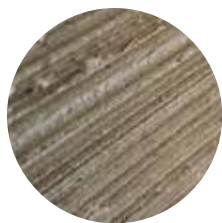
01
KAVERN



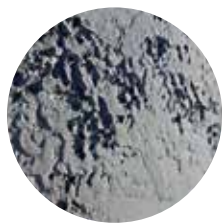
02
KOASTAL



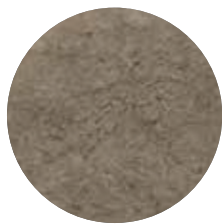
03
KAZA



04
KORAL



05
KORONA



For technical reasons connected to digital and photographic reproduction, the textures shown here may not match the actual end product.

For technical reasons connected to digital and photographic reproduction, the textures shown here may not match the actual end product.



06

KAISER



07

KASHMIR



08

KANYON



09

KOHL

Surface Preparation

Remove honeycomb and loose concrete. Check and repair all relevant surface defects such as cracks or gaps with corrective civil works. Waterproof as necessary. Make sure that the surface to be coated is clean and dry and that good weather persists prior to application. Products should be applied over bare concrete.

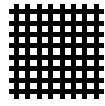
Tools you may need



Mixer



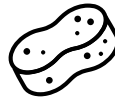
Clean Bucket



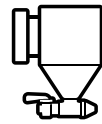
Fiber Mesh



Steel or
Plastic Trowel



Sponge



Mortar Gun



Roller



Spaghetti
Roller



Wood Roller



Brush



Stiff Brush



Airless Spray

		MAIN COMPONENT	APPLICATIONS
	KAVERN ™	K-202	Interior & Exterior
	KOASTAL ™	K-202 & K-231	Interior & Exterior
	KAZA ™	K-201	Interior & Exterior
	KORAL ™	K-201	Interior & Exterior
	KORONA ™	K-201	Interior & Exterior
	KAISER ™	K-201	Interior & Exterior
	KASHMIR ™	K-201	Interior & Exterior
	KANYON ™	K-202	Interior & Exterior
	KOHL ™	K-202	Interior & Exterior

For technical reasons connected to digital and photographic reproduction, the textures shown here may not match the actual end product.

CLEAR TOPCOAT**COLORED
TOPCOAT**

B-1708 + B-4600 or
B-1708 + B-1700

Water-based Latex Paint

N/A

Water-based Latex Paint

B-1708 + B-4600

Tint B-4600
(*Interior Applications Only)

B-1708 + B-4600

Tint B-4600
(*Interior Applications Only)

B-1708 + B-4600

Tint B-4600
(*Interior Applications Only)

B-1708 + B-4600

N/A

B-1708 + B-1700

N/A

B-1708 + B-4600 or
B-1708 + B-1700

Water-based Latex Paint

B-1708 + B-4600 or
B-1708 + B-1700

Water-based Latex Paint



Kavern™

**KONSTRUKT
LUNAR SERIES**™



For technical reasons connected to digital and photographic reproduction,
the textures shown here may not match the actual end product.

KONSTRUKT™ LUNAR SERIES™

- STEP 1** Stir Konstrukt Permaplast K-202 High-Performance Acrylic Render by using a mechanical mixing device to make sure that the product is lump-free and has the proper consistency.
- STEP 2** Transfer the mixture into a clean bucket and mix in cement using a ratio depending on the wanted outcome. Take note that the color of the mixture may vary depending on the brand and ratio of cement. Use a mechanical device to blend the mixture together to ensure proper mixing.
- STEP 3** Using a steel trowel, apply a thin layer of the mixture on the surface by pressing the edge of the trowel firmly on the concrete surface until all areas are covered.
- STEP 4** *(Optional)* While the applied product is still wet and workable, prevent any cracks from forming on the surface by placing a fiber mesh over it as a reinforcing membrane. Then, apply another layer of the mixture, making sure that the thickness of the applied layer is somewhere between 3mm to 5mm.
- STEP 5** Spread the mixture evenly using either a plastic or a steel trowel to prevent any unwanted marks and to achieve the desired stucco texture. Allow the product to cure for at least 7 days (depending on weather conditions) before paint application. There is no need to neutralize the surface.
- STEP 6** To protect the Kavern finish created, coat it with additional layers of protection to help hold it up against the usual wear and tear of everyday living. It is possible to either retain the bare cement finish or opt for a colored topcoat.

FOR BARE CEMENT FINISH

Sealer: BOYSEN® Acrytex™ Sealer B-1708
2nd and 3rd coat: BOYSEN® Acrytex™ Clear Coat B-1700 (Gloss) or
BOYSEN® Matte Shield™ B-4600 (Matte)

FOR COLORED TOPCOAT

Primer: BOYSEN® Permacoat™ Latex Flat White B-701
2nd and 3rd coat: Any Water-based Boysen Latex paint for concrete

KONSTRUKT™ LUNAR SERIES™

- STEP 1** Stir Konstrukt Permaplast K-202 High-Performance Acrylic Render by using a mechanical mixing device to make sure that the product is lump-free and has the proper consistency.
- STEP 2** Transfer the mixture into a clean bucket and mix in ordinary portland cement with a 1:1 ratio. Use a mechanical device to blend the mixture together.
- STEP 3** Apply the mixture on the surface by pressing the edge of the steel trowel firmly on the concrete surface until all areas are covered.
- STEP 4** While the applied product is still wet and workable, place a fiber mesh over the mixture as a reinforcing membrane then apply another layer of the mixture. Make sure that the thickness of the applied layer is somewhere between 3mm to 5mm. Allow to cure for at least 7 days (depending on weather conditions) before the application of the stucco Koastal finish.
- STEP 5** Blend Konstrukt Permaplast K-231 Deco Render using a mechanical mixing device to achieve the proper consistency. Only 5% (by volume) of clean water may be added into the mixture, for thinning purposes.
- STEP 6** Apply the mixture onto the surface by pressing the edge of the steel trowel firmly until all areas are covered. Immediately spread the mixture evenly by using a plastic trowel to achieve the desired stucco texture. No need to neutralize the surface. Let the application cure for at least 24 hours before the application of paint.
- STEP 7** To protect the Koastal finish, paint over the design with 2 coats of any Boysen water-based latex paint.



Koastal™

**KONSTRUKT
LUNAR SERIES™**

For technical reasons connected to digital and photographic reproduction,
the textures shown here may not match the actual end product.



Kaza™

KONSTRUKT
LUNAR SERIES™



For technical reasons connected to digital and photographic reproduction,
the textures shown here may not match the actual end product.

KONSTRUKT™ LUNAR SERIES™

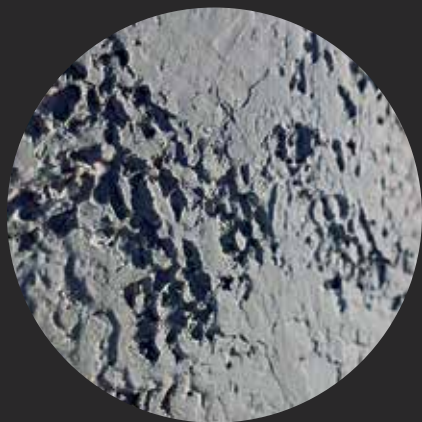
- STEP 1** Stir Konstrukt Permaplast K-201 High-Performance Skimcoat with a mechanical mixing device until product is lump-free.
- STEP 2** Transfer the mixture into a clean container and mix in cement at a recommended ratio of 1:1 by volume. Use a mixing device to make sure the product is well-blended, lump-free, and easy to apply using a trowel. The color of the mixture will vary depending on the type of cement used.
- STEP 3** Apply the mixture thinly on the surface by pressing the edge of the steel trowel firmly on the concrete until all areas are covered. Let the first coat dry for at least an hour before applying the second coat.
- STEP 4** Let the second coat dry at least for 30 minutes prior to texturing the surface. Use a stiff brush applied vertically or horizontally to achieve the finish. There is no need to neutralize the surface. Should the second coat still be uneven, a third coat may be applied prior to texturing the surface.
- STEP 5** The Kaza finish can be applied both on interior and exterior walls. To protect your finish from wear and tear, apply a coat of Boysen Acrytex Sealer B-1708. Let the sealer dry for at least 2 hours then apply 2 coats of Boysen Matte Shield B-4600 (wait for two hours in between coats.) It's best to apply these products by using a spray to avoid lap marks. But if that's not available, just make sure to swipe off excess product from your roller onto the paint tray. Apply the product thinly on the surface to prevent roller marks.

For interior applications, the final coat of Boysen Matte Shield B-4600 may be tinted with Boysen Latex Colors with a maximum ratio of 1:16 (Colorant to Matte Shield, respectively). Use a sponge and apply the product to achieve a faded look.

KONSTRUKT™ LUNAR SERIES™

- STEP 1** Stir Konstrukt Permaplast K-201 High-Performance Skimcoat with a mechanical mixing device until product is lump-free.
- STEP 2** Transfer the mixture into a clean container and mix in cement at a recommended ratio of 1:1 by volume. Use a mixing device to make sure the product is well-blended, lump-free, and easy to apply using a trowel. The color of the mixture will vary depending on the type of cement used.
- STEP 3** Apply the mixture thinly on the surface by pressing the edge of the steel trowel firmly on the concrete until all areas are covered. Let the first coat dry for at least an hour before applying the second coat.
- STEP 4** Load some product onto the surface, around 2mm - 3mm thick, by using a steel trowel then run through the applied product using a spaghetti roller to create a textured surface. The spaghetti roller creates a really nice pattern that's unique to the Korall finish. Let it dry for at least an hour then do some light sanding on the textured surface to even out some of the stiff peaks that will have formed.
- STEP 5** Make sure that the surface is clean from any sanding debris before the application of the third coat. Depending on the look desired, one can either use a steel trowel or a putty knife. Apply the mixture in random strokes to achieve the desired finish. No need to neutralize the surface.
- STEP 6** The Korall finish can be applied both on interior and exterior walls. To protect your finish from wear and tear, apply a coat of Boysen Acrytex Sealer B-1708. Let the sealer dry for at least 2 hours then apply 2 coats of Boysen Matte Shield B-4600 (wait for two hours in between coats.) It's best to apply these products by using a spray to avoid lap marks. But if that's not available, just make sure to swipe off excess product from your roller onto the paint tray. Apply the product thinly on the surface to prevent roller marks.

For interior applications, the final coat of Boysen Matte Shield B-4600 may be tinted with Boysen Latex Colors with a maximum ratio of 1:16 (Colorant to Matte Shield, respectively). Use a sponge and apply the product to achieve a faded look.



Koral™

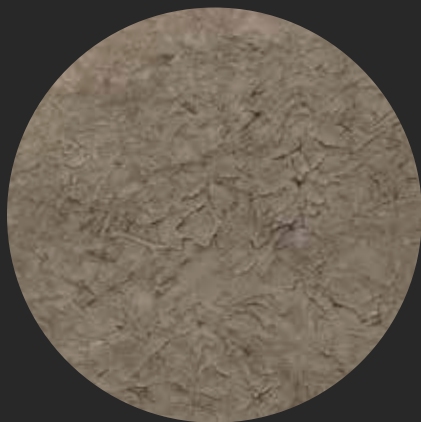
**KONSTRUKT
LUNAR SERIES™**

For technical reasons connected to digital and photographic reproduction, the textures shown here may not match the actual end product.



Korona™

**KONSTRUKT
LUNAR SERIES™**



For technical reasons connected to digital and photographic reproduction,
the textures shown here may not match the actual end product.

KONSTRUKT™ LUNAR SERIES™

- STEP 1** Stir Konstrukt Permaplast K-201 High-Performance Skimcoat with a mechanical mixing device until product is lump-free.
- STEP 2** Transfer the mixture into a clean container and mix in cement at a recommended ratio of 1:1 by volume. Use a mixing device to make sure the product is well-blended, lump-free, and easy to apply using a trowel. The color of the mixture will vary depending on the type of cement used.
- STEP 3** Apply the mixture thinly on the surface by pressing the edge of the steel trowel firmly on the concrete until all areas are covered. Let the first coat dry for at least an hour before applying the second coat. Let the second coat dry for another hour before applying the third coat.
- STEP 4** While the third coat is still wet and workable, angle the edge of the trowel (less than 10 degrees) from the surface and apply light, arbitrary strokes on the mixture to achieve the finish. No need to neutralize the surface. Let the application cure for at least 7 days before applying a protective coat over the design.
- STEP 5** The Korona finish can be applied both on interior and exterior walls. To protect your finish from wear and tear, apply a coat of Boysen Acrytex Sealer B-1708. Let the sealer dry for at least 2 hours then apply 2 coats of Boysen Matte Shield B-4600 (wait for two hours in between coats.) These products are best applied by using a spray to avoid lap marks. If a spray is unavailable, make sure to swipe off excess product from your roller onto the paint tray. Apply the product thinly on the surface to prevent roller marks.

For interior applications, the final coat of Boysen Matte Shield B-4600 may be tinted with Boysen Latex Colors with a maximum ratio of 1:16 (Colorant to Matte Shield, respectively). Use a sponge and apply the product to achieve a faded look.

KONSTRUKT™ LUNAR SERIES™

- STEP 1** Stir Konstrukt Permaplast K-201 High-Performance Skimcoat with a mechanical mixing device until product is lump-free.
- STEP 2** Transfer the mixture into a clean container and mix in cement at a recommended ratio of 1:1 by volume. Use a mixing device to make sure the product is well-blended, lump-free, and easy to apply using a trowel. The color of the mixture will vary depending on the type of cement used.
- STEP 3** Apply a thin layer of the mixture on the surface by pressing the edge of the steel trowel firmly on the concrete until all areas are covered. Let the applied mixture dry for at least an hour before applying the second coat.
- STEP 4** The succeeding coat should be applied in random strokes to achieve a cement finish. Do the same process for the third coat, if necessary. Let the applied mixture cure for at least 7 days before applying any clear coats. There is no need to neutralize the surface.
- STEP 5** The Kaiser finish can be applied both on interior and exterior walls. To protect your finish from wear and tear, apply a coat of Boysen Acrytex Sealer B-1708. Let the sealer dry for at least 2 hours then apply 2 coats of Boysen Matte Shield B-4600 (wait for 2 hours in between coats). These products are best applied by using a spray to avoid lap marks. If a spray is unavailable, make sure to swipe off excess product from your roller onto the paint tray. Apply the product thinly on the surface to prevent roller marks.



Kaiser™

**KONSTRUKT
LUNAR SERIES™**

For technical reasons connected to digital and photographic reproduction,
the textures shown here may not match the actual end product.



Kashmir™

**KONSTRUKT
LUNAR SERIES™**



For technical reasons connected to digital and photographic reproduction,
the textures shown here may not match the actual end product.

KONSTRUKT™ LUNAR SERIES™

- STEP 1** Stir Konstrukt Permaplast K-201 High-Performance Skimcoat with a mechanical mixing device until product is lump-free.
- STEP 2** Transfer the mixture into a clean container and mix in cement at a recommended ratio of 1:1 by volume. Use a mixing device to make sure the product is well-blended, lump-free, and easy to apply using a trowel. The color of the mixture will vary depending on the type of cement used.
- STEP 3** Apply a thin layer of the mixture on the surface by pressing the edge of the steel trowel firmly on the concrete until all areas are covered. Let the applied mixture dry for at least an hour before applying the second coat.
- STEP 4** The succeeding coat should be applied in random strokes to achieve a cement finish. Do the same process for the third coat, if necessary. Let the applied mixture cure for at least 7 days before applying any other product. There is no need to neutralize the surface.
- STEP 5** The Konstrukt products used for the Kashmir Finish is meant for surface preparation. In order to protect your design, apply a coat of Boysen Acrytex Sealer B-1708 after letting the product cure for at least a week. Let the sealer dry for at least 2 hours before applying 2 more coats of Boysen Acrytex Clear Coat B-1700 (with 2 hours dry time in between coats). These products are best applied by using a spray to avoid lap marks. If a spray is unavailable, make sure to swipe off excess product from your roller onto the paint tray. Apply the product thinly on the surface to prevent roller marks.

KONSTRUKT™ LUNAR SERIES™

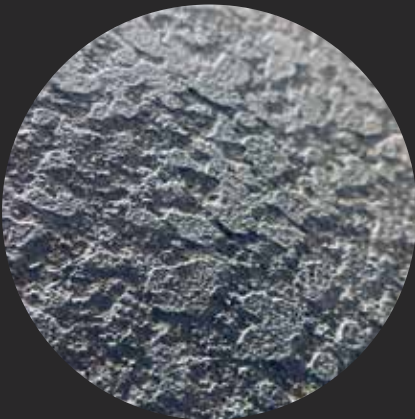
- STEP 1** Stir Konstrukt Permaplast K-202 High-Performance Acrylic Render using a mechanical mixing device to obtain the proper consistency. Transfer the mixture into a clean container and mix in Portland cement at a 1:1 ratio using the mixing device until it's lump-free.
- STEP 2** Apply a thin layer of the mixture on the surface by pressing the edge of the steel trowel firmly on the concrete until all areas are covered. The applied mixture should be between 3mm to 5mm thick. Let it dry for at least half an hour before the spray application of the coarse texture finish.
- STEP 3** Use a mixing device to blend another batch of Konstrukt Permaplast K-202 High-Performance Acrylic Render until it's lump-free. Transfer the mixture into another clean container and mix in Portland cement using a mixing device until it becomes sprayable.
- STEP 4** Use a mortar gun to spray the mixture on the substrate until the desired coarse texture is achieved. To emphasize the sandy texture of the finish, use a wooden roller to level the applied material. Let the whole system cure for at least 7 days before applying anything else onto the substrate.
- STEP 5** To protect the Canyon finish created, coat it with additional layers of protection to help hold it up against the usual wear and tear of everyday living. It is possible to either retain the bare cement finish or opt for a colored topcoat.

FOR BARE CEMENT FINISH

Sealer: BOYSEN® Acrytex™ Sealer B-1708
2nd and 3rd coat: BOYSEN® Acrytex™ Clear Coat B-1700 (Gloss) or
BOYSEN® Matte Shield™ B-4600 (Matte)

FOR COLORED TOPCOAT

Primer: BOYSEN® Permacoat™ Latex Flat White B-701
2nd & 3rd coat: Any Water-based Boysen Latex paint for concrete



Kanyon™

**KONSTRUKT
LUNAR SERIES™**

For technical reasons connected to digital and photographic reproduction,
the textures shown here may not match the actual end product.



Kohl™

**KONSTRUKT
LUNAR SERIES™**



For technical reasons connected to digital and photographic reproduction,
the textures shown here may not match the actual end product.

KONSTRUKT™ LUNAR SERIES™

- STEP 1** Stir Konstrukt Permaplast K-202 High-Performance Acrylic Render using a mechanical mixing device to obtain proper consistency. Transfer the mixture into a clean container and mix in Portland cement at a 1:1 ratio using the mixing device until the product is free from any clumps.
- STEP 2** Apply a thin layer of the mixture on the surface by pressing the edge of the steel trowel firmly on the concrete until all areas are covered. The applied mixture should be between 3mm to 5mm thick. Let it dry for at least half an hour before the spray application of the fine-textured finish.
- STEP 3** Use a mixing device to blend another batch of Konstrukt Permaplast K-202 High-Performance Acrylic Render until it's lump-free. Transfer the mixture into another clean container and mix in Portland cement using a mixing device until it becomes sprayable.
- STEP 4** Use a mortar gun to spray the mixture on the substrate until you get the fine texture that you want. Let the whole system cure for at least 7 days before applying anything else onto the substrate.
- STEP 5** To protect the Kohl finish created, coat it with additional layers of protection to help hold it up against the usual wear and tear of everyday living. It is possible to either retain the bare cement finish or opt for a colored topcoat.

FOR BARE CEMENT FINISH

Sealer: BOYSEN® Acrytex™ Sealer B-1708
2nd and 3rd coat: BOYSEN® Acrytex™ Clear Coat B-1700 (Gloss) or
BOYSEN® Matte Shield™ B-4600 (Matte)

FOR COLORED TOPCOAT

Primer: BOYSEN® Permacoat™ Latex Flat White B-701
2nd & 3rd coat: Any Water-based Boysen Latex paint for concrete



For technical reasons connected to digital and photographic reproduction,
the textures shown here may not match the actual end product.



**FOR PROS.
BY PROS.**

For technical reasons connected to digital and photographic reproduction,
the textures shown here may not match the actual end product.

FOR PROS. BY PROS.

BOYSEN®



The No. 1 PAINT

PACIFIC PAINT (BOYSEN) PHILIPPINES, INC.

292 D. Tuazon Street, Quezon City, Philippines

Hotline: (02) 8364-9999

Tel Nos.: (02) 8364-3505 to 09; (02) 8365-0561 to 64

Fax Nos.: (02) 8361-7164; (02) 8367-8881

inquiry@boysen.com.ph

www.konstruktchem.com

Boysen®, Boysen® eagle symbol, Konstrukt™ Durafill™, Konstrukt™ Permaplast™, Konstrukt™ Tileworks™ are registered trademarks of the Pacific Paint (BOYSEN) Philippines, Inc.

MAY 2023

**For technical reasons connected to digital and photographic reproduction,
the textures shown here may not match the actual end product.**